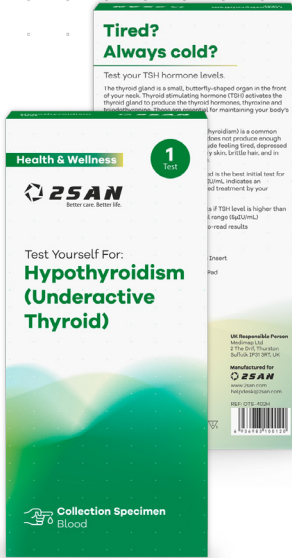


# Hypothyroidism (Underactive Thyroid)

FOR SELF-TESTING USE



## Tired? Always cold? Test your TSH hormone levels.

The thyroid gland is a small, butterfly-shaped organ in the front of your neck. Thyroid-stimulating hormone (TSH) activates the thyroid gland to produce the thyroid hormones, thyroxine, and triiodothyronine. These are essential for maintaining your body's metabolism.

An underactive thyroid gland (hypothyroidism) is a common condition where your thyroid gland does not produce enough hormones in response to TSH, causing TSH levels to rise. Common symptoms include feeling tired, depressed, or cold regularly, weight gain, dry skin, brittle hair, and menstrual cycle irregularities in women.

Testing of TSH levels in the blood is the best initial test for hypothyroidism. A TSH level over  $5\mu\text{IU/mL}$  indicates an underactive thyroid, which requires treatment at your healthcare provider.

-  **Result in 10 minutes**
-  **User friendly design**
-  **Easy-to-Read Results**
-  **Simple Finger Prick Test**
-  **Detects TSH level (normal range  $5\mu\text{IU/mL}$ )**

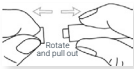
## Specification

<b>Intended Use</b>	Chromatographic immunoassay for qualitative detection of TSH in human serum	<b>Time to Result</b>	10 minutes
<b>Storage</b>	2-30°C	<b>Shelf Life</b>	2 years
<b>Specimen Type</b>	Whole Blood	<b>Sensitivity</b>	98.1%
		<b>Accuracy</b>	98.2%
		<b>Specificity</b>	98.2%

## Components

- 1 Test Cassette
- 1 Buffer
- 1 Lancet
- 1 Alcohol Pad
- 1 Capillary Dropper
- 1 test per pack
- 1 Package Insert

## Procedure



**I.** Pull off and dispose cap of lancet



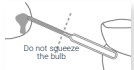
**II.** Clean fingertip with alcohol pad



**III.** Press the lancet against the fingertip



**IV.** Massage the pricked fingertip to obtain blood drop



**V.** Put capillary dropper in contact with blood and draw the blood to fill line



**VI.** Put the collected blood into the sample well



**VII.** Add 2 drop of the buffer



**VIII.** Wait for the coloured line and read results at 10 minutes

## Interpretation



**NORMAL**  
Two distinct coloured lines appear Both T & C. Your TSH levels are normal.



**ABNORMAL**  
One line appears in C region. Your TSH levels are high.



**INVALID**  
The Control line fails to appear. Repeat the test.