

# Male Fertility

FOR SELF-TESTING USE

## Planning a pregnancy? Use 2San's discreet test to check your sperm count.

Get quick, accurate results in the privacy of your home.

When your sperm count drops below 15 million/mL, it can make it more difficult to conceive naturally. Find out whether your sperm count is above or below the threshold with 2San's rapid Sperm Concentration test.

Problems with sperm, including a low sperm count, are a factor in 1 in 3 couples struggling to conceive.

Whether you're planning a pregnancy or have started trying for a baby, this initial screening test can help you take proactive steps on your pregnancy journey. Because low sperm count is a common cause of male infertility, testing the sperm count is an important first step in determining if it's the reason behind infertility.



-  **Result in 5 minutes**
-  **User friendly design**
-  **Easy-to-Read Results**
-  **Simple semen analysis**
-  **Detects sperm concentration (normal levels  $\geq 15$  million/mL)**

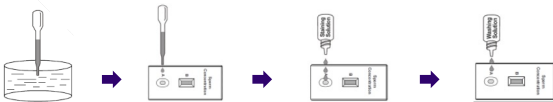
## Specification

<b>Intended Use</b>	Biochemical assay for qualitative estimation of sperm in human semen	<b>Time to Result</b>	5 minutes
<b>Storage</b>	2-30°C	<b>Shelf Life</b>	2 years
<b>Specimen Type</b>	Semen	<b>Sensitivity</b>	98.1%
		<b>Accuracy</b>	99.2%
		<b>Specificity</b>	99.5%

## Components

- 1 Test Cassette
- 1 Dropper
- 1 Staining Solution
- 1 Workstation
- 1 Package Insert
- 1 Collection Cup
- 1 Washing Solution
- 1 Procedure Card
- 1 Test

## Procedure



**I.** Shake the semen evenly in the collection cup and leave it to stand for 15 minutes, until the semen liquefies

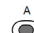
**II.** Add 1 drop of specimen

**III.** Add 3 drops of blue staining solution, wait 1-2 minutes


**IV.** Add 2 drops transparent washing solution, wait for 1-2 minutes

## Interpretation

### Compare the colour of test Well A to reference Well B

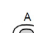


**A**

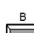


**B**

**NORMAL**  
The colour of test well A is darker than reference well B. It means that the sperm concentration is greater than 15 million/mL.



**A**



**B**

**ABNORMAL**  
The colour of test well A is lighter than reference well B. It means that the sperm concentration is less than 15 million/mL.