

Bowel Cancer

FOR SELF-TESTING USE

Noticed a change in bowel habits?

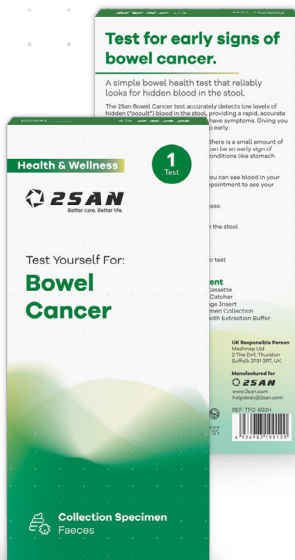
Test for early signs of bowel cancer. A simple bowel health test that reliably looks for hidden blood in the stool. Recommended if you have noticed a change in bowel habit or unexplained weight loss.

An immunochemical faecal occult blood test (iFOBT or FIT) looks for tiny traces of blood in the stool that aren't visible. Blood in the stool indicates there is bleeding in the digestive tract. This can be a sign of bowel cancer, or another medical condition, such as diverticulitis, an ulcer or polyps.

The 2San FOB test accurately detects low levels of hidden blood in the stool, providing a rapid, accurate screen for early signs of bowel cancer, before you have symptoms. Giving you the best chance to seek medical help early.

This test is not suitable if you have visible rectal bleeding or anal ulceration.

- Simple Stool Sample
- >99% accurate
- No preparation Required
- Better sensitivity than stool guaiac test
- Results within 5 minutes
- Easy-to-read results



Specification

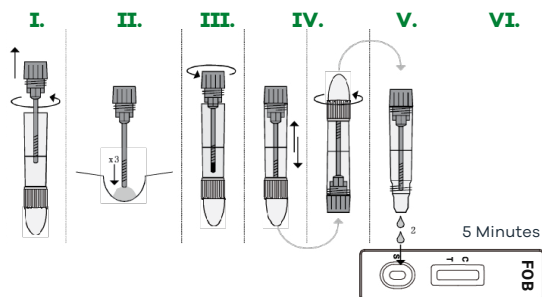
Intended Use	Early detection of hidden blood in the stool (50 ng/mL or 3 µg/g faeces)
Storage	2-30°C
Specimen Type	Faeces

Time to Result	5 minutes
Shelf Life	2 years
Sensitivity	97.6 %
Accuracy	99.0 %
Specificity	99.3 %

Components

- 1 Test Cassette
- 1 Stool Catcher
- 1 Package Insert
- 1 Specimen Collection Tube with Extraction Buffer

Procedure



Interpretation

	NORMAL Two distinct coloured lines appear Both T & C. No blood was identified.
	ABNORMAL One line appears in C region. There is blood in your stool. See a doctor to review your symptoms.
	INVALID The Control line fails to appear. Repeat the test.

Allow the test, specimen, and buffer to reach room temperature (15-30 °C) prior to testing. To collect fecal specimens:

- I.** Unscrew collection tube probe
- II.** Using stool catcher, collect the fecal specimen and stab 3x with the probe in different positions
- III.** Place probe back into collection tube with the extraction buffer
- IV.** Shake the specimen tube vigorously to mix specimen and extraction buffer
- V.** Unscrew the other end of the tube and place 2 drops onto the cassette
- VI.** Read results at **5 minutes**.

Not available in the United States